

## 2024 Friends Membership Drive Report

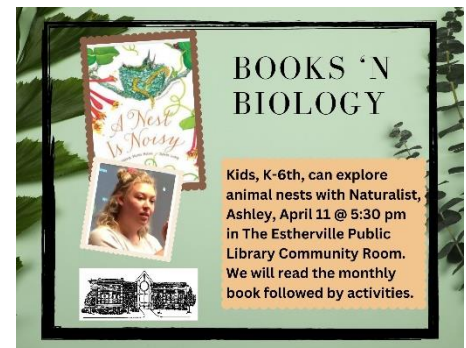
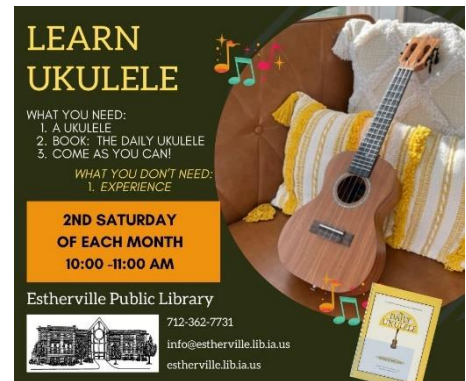
- **So far, the 2024 Membership Drive has brought in:**
  - 99 total members
  - \$3,190.00 total income
  - 9 have used the online payment method

## Regular Library Programming / Events:

- **Online Knit & Crochet Group (weekly)**
  - We continue to host weekly Zoom meetings, hosted by Tena.
- **Book Club (monthly)**
  - This is hosted in-person, by Beth.
- **Story Times (weekly)**
  - Paula and Beth have offered story time events in the Children's Department
- **Lego League (monthly)**
  - Continues year-round as a passive program offered monthly on Saturdays.
- **Come & Go Crafts (on days with no school)**
  - Each time the school schedules a teacher in-service day, our Children's Department will host a come-and-go craft all day long.
- **Art Sparks (monthly)**
  - Every third Saturday there will also be an art activity in the Children's Department.
- **Teen Events (monthly)**
  - One activity and one "Teen Tasters" event per month, hosted by Beth
- **Ukulele Group (monthly)**
  - The second Saturday of each month at 10:00 all are welcome to join for an hour of signing and strumming.

## Special Events:

- **Maker Mondays & Adult Programs**
  - Since January we've hosted Paint by Number, a Jigsaw Puzzle Competition, a Garden Planning Workshop, a Rustic Rabbit Workshop, and Who Gets Grandma's Yellow Pie Plate
- **Storytime & Children's Programs** included Bead crafts, a Stuffed Animal Pet Show, Bird activities, and a Shark Program
- **Teen Programs**
  - Beth has been hosting opportunities for teens such as Lego Stop Motion, Needle Felted Hearts, and Freeze-Dried Candy.



### Let's talk Spring Birding

Monday, April 22 5:30pm  
Estherville Library

- Which ones show up first
- Where to look
- How to identify them
- How to attract them

Did you know that Birding is a great activity for your Mental Health?

Sue Boettcher, Adult Program Coordinator and birding enthusiast with ISU Extension & Outreach Emmet County will be sharing resources.



**Upcoming:**

- All are welcome to join our April 22nd event with Sue Boettcher of the ISU Extension **Spring Birds**, which will be held at 5:30 pm.
- Anyone interested can join us for our new **Ukulele Group**, which meets the 2nd Saturday of each month at 10:00.
- Our adult craft for April, the **Painted Pots Workshop**, filled quickly, but we are taking a waiting list if you'd like to call to be added to that.
- We are hosting **Come & Go Earth Day Activities** in the children's department on April 22nd from 9:30-6:00.
- The children's department is also hosting a **Superhero Academy** on the 1st, and a program on **Animal Nests** with guest Ashley Foley from the Nature Center on the 11th.



**TEEN CRAFT: POWER PORTRAITS**  
MONDAY, APRIL 15, 2024  
5:00-6:00 PM  
FREE FOR TEENS 11TH -12TH GRADE

ESTHERVILLE PUBLIC LIBRARY  
613 Central Ave  
712.362.7731

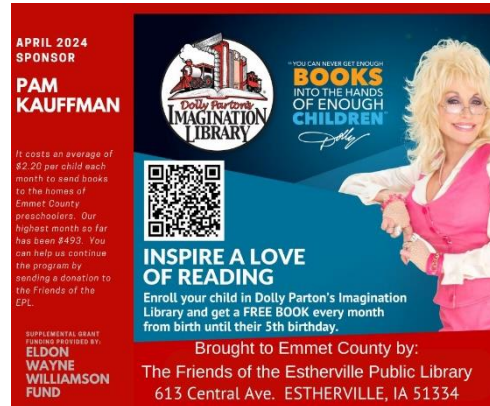
- Bring your favorite selfie
- Or take a selfie this night
- Pet pics welcome too!



**CELEBRATE EARTH DAY**  
APRIL 22, 2024  
9:30 AM-6:00 PM

KIDS 6TH GRADE AND YOUNGER TEST YOUR ENGINEERING SKILLS BY BUILDING A BEAVER DAM AND STAMPING WITH ANIMAL TRACKS AT THESE COME AND GO ACTIVITIES

INFO@ESTHERVILLE.LIB.IA.US  
(712) 362-7731



APRIL 2024 SPONSOR  
**PAM KAUFFMAN**

YOU CAN NEVER GET ENOUGH BOOKS INTO THE HANDS OF ENOUGH CHILDREN

**INSPIRE A LOVE OF READING**

Enroll your child in Dolly Parton's Imagination Library and get a FREE BOOK every month from birth until their 5th birthday.

Brought to Emmet County by:  
The Friends of the Estherville Public Library  
613 Central Ave. ESTHERVILLE, IA 51334